


**EXPROOF FLEXIBLE CONDUIT GLANDS**

**TECHNICAL DETAILS**

Certificate : IEP 15 ATEX 0355 X  
 Protection code : II 2G Exd/e IIC Gb II 1D Ex ta IIIC Da I M2 Exd/e I Mb  
 Standards : EN 60079-0:2009, 60079-1:2007, 60079-31:2009  
 Protection class : IP67  
 Temperature range: -20 °C +80 °C

**Material**

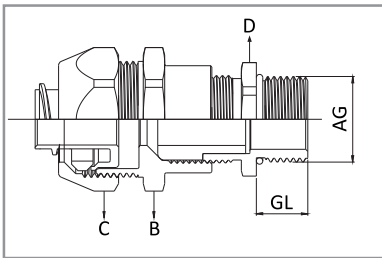
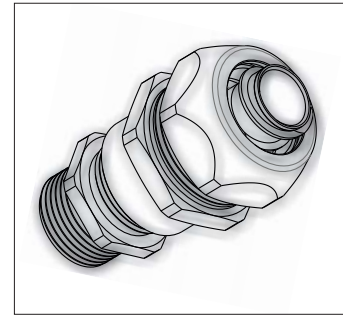
Cup nut : Brass with nickel plated  
 Clamping insert : PA6 V0  
 Sealing ring : TPV  
 Ring : PA6 V0  
 Ferrule : Aluminium / brass  
 Gland body : Brass with nickel plated  
 O-ring : NBR / silicone  
 Connection thread : Metric EN (60423)/ASME B 10.20.1 / DIN 259

**Properties**

Easy to assemble  
 Fixed or swivel body version  
 Apply with either LGT or CTS, CTPS conduits

## FLEXIBLE SPIRAL CONDUIT GLANDS

LIQUID TIGHT  
WITH CABLE HOLDER


**PG FIXED/SWIVEL BODY**

Code	AG Thread	Spiral Measure	GL min. mm	B mm.	C mm.	D mm.	Cables mm.
MLSRP 00	PG 7	10-1/4"	15	20	22	14	3-6,5
MLSRP 1A	PG 9	10-1/4"	15	20	22	17	4-8
MLSRP 01	PG 11	13-3/8"	15	24	26	20	5-10
MLSRP 2A	PG 13,5	16-1/2"	15	27	29	22	6-12
MLSRP 02	PG 16	16-1/2"	15	27	29	24	10-14
MLSRP 03	PG 21	21-3/4"	15	33	35	30	13-18
MLSRP 04	PG 29	26-1"	15	43	45	40	18-25
MLSRP 05	PG 36	35-1 1/4"	15	52	54	50	22-32
MLSRP 06	PG 42	40-1 1/2"	15	60	63	57	30-38
MLSRP 07	PG 48	51-2	15	74	77	64	34-44

**METRIC FIXED/SWIVEL BODY**

MLSRM 00	M 12 x 1,5	10-1/4"	15	20	22	14	3-6,5
MLSRM 1A	M 16 x 1,5	10-1/4"	15	20	22	18	4-8
MLSRM 01	M 16 x 1,5	13-3/8"	15	24	26	18	4-8
MLSRM 02	M 20 x 1,5	16-1/2"	15	27	29	22	6-12
MLSRM 03	M 25 x 1,5	21-3/4"	15	33	35	27	10-14
MLSRM 04	M 32 x 1,5	26-1"	15	43	45	34	13-18
MLSRM 05	M 40 x 1,5	35-1 1/4"	15	52	54	43	18-25
MLSRM 06	M 50 x 1,5	40-1 1/2"	15	60	63	55	22-32
MLSRM 07	M 63 x 1,5	51-2	15	74	77	68	34-44

PRODUCT RANGE OVERVIEW

IP 67