

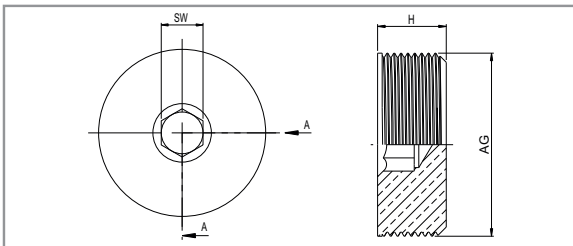
**STOPPER PLUG**



**TECHNICAL DETAILS**

Type : TO-XX / STOPPER PLUG  
 Protection code : II 2G Exd/e IIC Gb II 1D Ex ta IIIC Da  
 I M2 Ex d/e I Mb  
 Certificate : IEP 15 ATEX 0333U  
 Material : Brass, brass with nickel plated, stainless steel  
 Standards : EN 60079-0 2009 /60079-1 2007/ 60079-31 2009  
 O-ring : NBR / Silicone  
 Temperature range : -60 °C +200 °C  
 Protection class : IP66-IP68 (EN 60529)  
 Application area : ZONE1 , ZONE 2, ZONE 21 , ZONE 22  
 Gas groups IIA , IIB , IIC

STOPPER  
PLUG



PRODUCT RANGE OVERVIEW

Product Size	Product Code	GL min. mm	SW mm
M12 x 1.5	TO-XX/M12	15	6
M16 x 1.5	TO-XX/M16	15	8
M20 x 1.5	TO-XX/M20	15	10
M25 x 1.5	TO-XX/M25	15	10
M32 x 1.5	TO-XX/M32	15	10
M40 x 1.5	TO-XX/M40	15	10
M50 x 1.5	TO-XX/M50	15	10
M63 x 1.5	TO-XX/M63	15	10
M75 x 1.5	TO-XX/M75	15	14
M90 x 2	TO-XX/M90	20	14
M100 x 2	TO-XX/M100	20	14
NPT 1/4"	TO-XX/N14	15	6
NPT 3/8"	TO-XX/N38	15	8
NPT 1/2"	TO-XX/N12	15	10
NPT 3/4"	TO-XX/N34	15	10
NPT 1"	TO-XX/N100	15	10
NPT 1 1/4"	TO-XX/N114	15	10
NPT 1 1/2"	TO-XX/N112	15	10
NPT 2"	TO-XX/N200	15	10
NPT 2 1/2"	TO-XX/N212	20	14
NPT 3"	TO-XX/N300	20	14
NPT 4"	TO-XX/N400	20	14
G 1/4"	TO-XX/G14	15	6
G 3/8"	TO-XX/G38	15	8
G 1/2"	TO-XX/G12	15	10
G 3/4"	TO-XX/G34	15	10
G 1"	TO-XX/G100	15	10
G 1 1/4"	TO-XX/G114	15	10
G 1 1/2"	TO-XX/G112	15	10
G 2"	TO-XX/G200	15	10
G 2 1/2"	TO-XX/G212	20	14
G 3"	TO-XX/G300	20	14
G 4"	TO-XX/G400	20	14
PG7	TO-XX/P7	15	6
PG9	TO-XX/P9	15	8
PG 11	TO-XX/P11	15	10
PG 13,5	TO-XX/P13	15	10
PG16	TO-XX/P16	15	10
PG21	TO-XX/P21	15	10
PG29	TO-XX/P29	15	10
PG36	TO-XX/P36	15	10
PG42	TO-XX/P42	15	10
PG48	TO-XX/P48	15	10