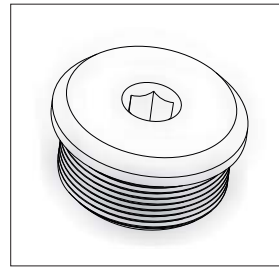
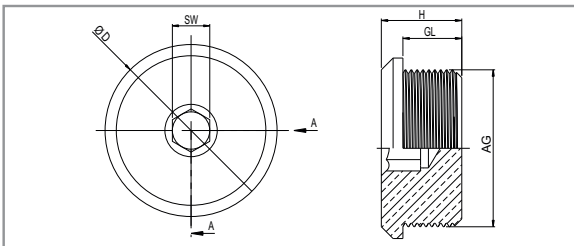


STOPPER PLUG


STOPPER PLUG

TECHNICAL DETAILS

Type : TS-XX / STOPPER PLUG
 Protection code : II 2G Exd/e IIC Gb II 1D Ex ta IIIC Da
 I M2 Ex d/e I Mb
 Certificate : IEP 15 ATEX 0333U
 Material : Brass, brass with nickel plated, stainless steel
 Standards : EN 60079-0 2009 /60079-1 2007/ 60079-31 2009
 O-ring : NBR / Silicone
 Temperature range : -60 °C +200 °C
 Protection class : IP66-IP68 (EN 60529)
 Application area : ZONE 1 , ZONE 2, ZONE 21 , ZONE 22
 Gas groups IIA , IIB , IIC


PRODUCT RANGE OVERVIEW

Product Size	Product Code	GL min. mm	H mm	D mm	SW mm
M12 x 1,5	TS-XX-M12	15	21	17	6
M16 x 1,5	TS-XX-M16	15	21	22	8
M20 x 1,5	TS-XX-M20	15	21	27	10
M25 x 1,5	TS-XX-M25	15	21	30	10
M32 x 1,5	TS-XX-M32	15	21	36	10
M40 x 1,5	TS-XX-M40	15	21	46	10
M50 x 1,5	TS-XX-M50	15	21	55	10
M63 x 1,5	TS-XX-M63	15	21	68	10
M75 x 1,5	TS-XX-M75	15	21	80	14
M90 x 2	TS-XX-M90	20	26	95	14
M100 x 2	TS-XX-M100	20	26	108	14
NPT 1/4"	TS-XX-N14	15	21	19	6
NPT 3/8"	TS-XX-N38	15	21	23	8
NPT 1/2"	TS-XX-N12	15	21	27	10
NPT 3/4"	TS-XX-N34	15	21	32	10
NPT 1"	TS-XX-N100	15	21	39	10
NPT 1 1/4"	TS-XX-N114	15	21	48	10
NPT 1 1/2"	TS-XX-N112	15	21	55	10
NPT 2"	TS-XX-N200	15	21	65	10
NPT 2 1/2"	TS-XX-N212	20	26	78	14
NPT 3"	TS-XX-N300	20	26	95	14
NPT 4"	TS-XX-N400	20	26	120	14
G 1/4"	TS-XX-G14	15	21	19	6
G 3/8"	TS-XX-G38	15	21	22	8
G 1/2"	TS-XX-G12	15	21	26	10
G 3/4"	TS-XX-G34	15	21	32	10
G 1"	TS-XX-G100	15	21	39	10
G 1 1/4"	TS-XX-G114	15	21	45	10
G 1 1/2"	TS-XX-G112	15	21	53	10
G 2"	TS-XX-G200	15	21	65	10
G 2 1/2"	TS-XX-G212	20	26	80	14
G 3"	TS-XX-G300	20	26	93	14
G 4"	TS-XX-G400	20	26	118	14
PG7	TS-XX-P7	15	21	18	6
PG9	TS-XX-P9	15	21	21	8
PG 11	TS-XX-P11	15	21	24	10
PG 13,5	TS-XX-P13	15	21	26	10
PG16	TS-XX-P16	15	21	28	10
PG21	TS-XX-P21	15	21	34	10
PG29	TS-XX-P29	15	21	42	10
PG36	TS-XX-P36	15	21	52	10
PG42	TS-XX-P42	15	21	59	10
PG48	TS-XX-P48	15	21	65	10